

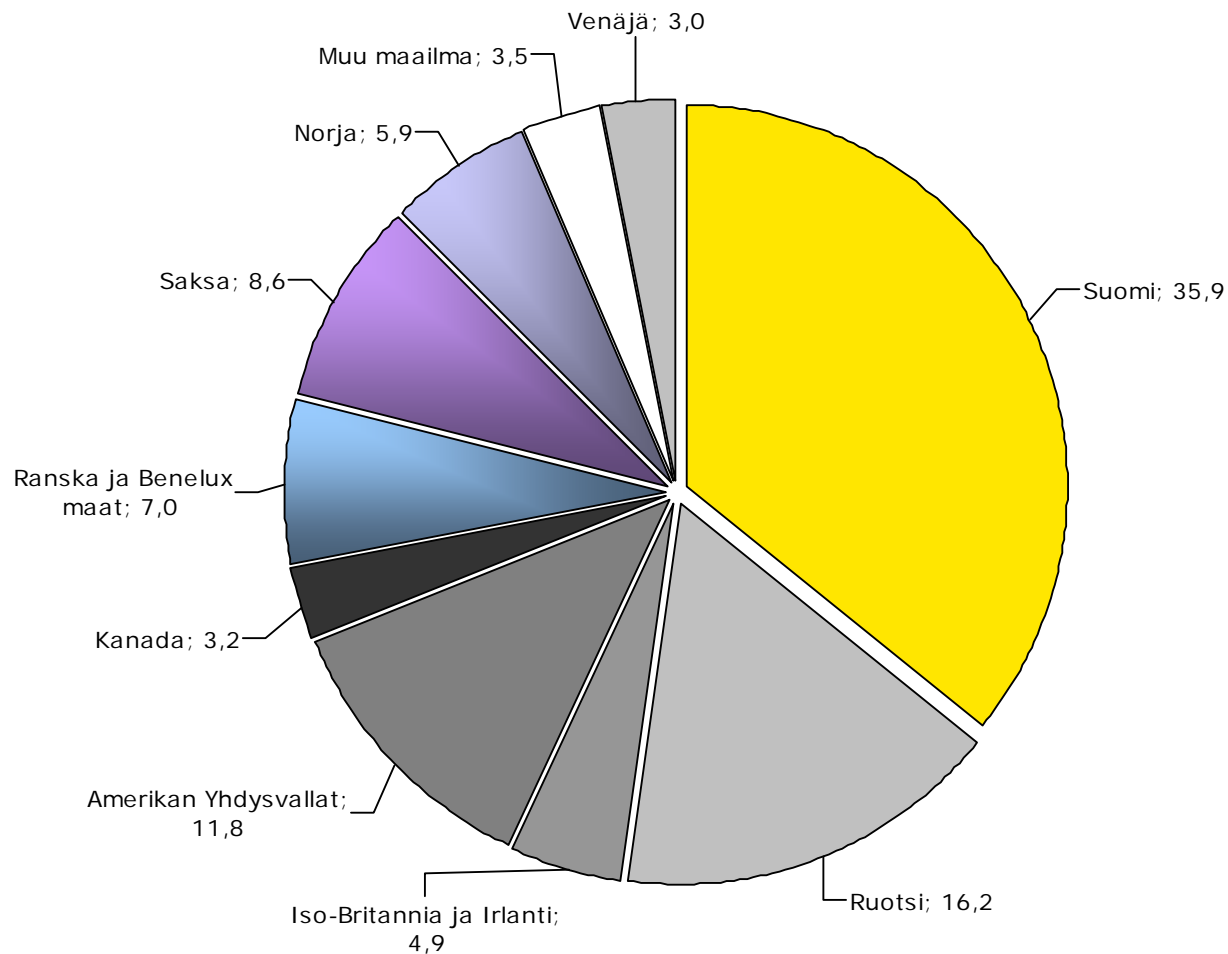
A Ponsse tracked loader is shown in a forest environment. The machine is black and yellow, with a large hydraulic arm and bucket. The background consists of tall, thin trees. The Ponsse logo is visible in the top right corner.

PONSSE

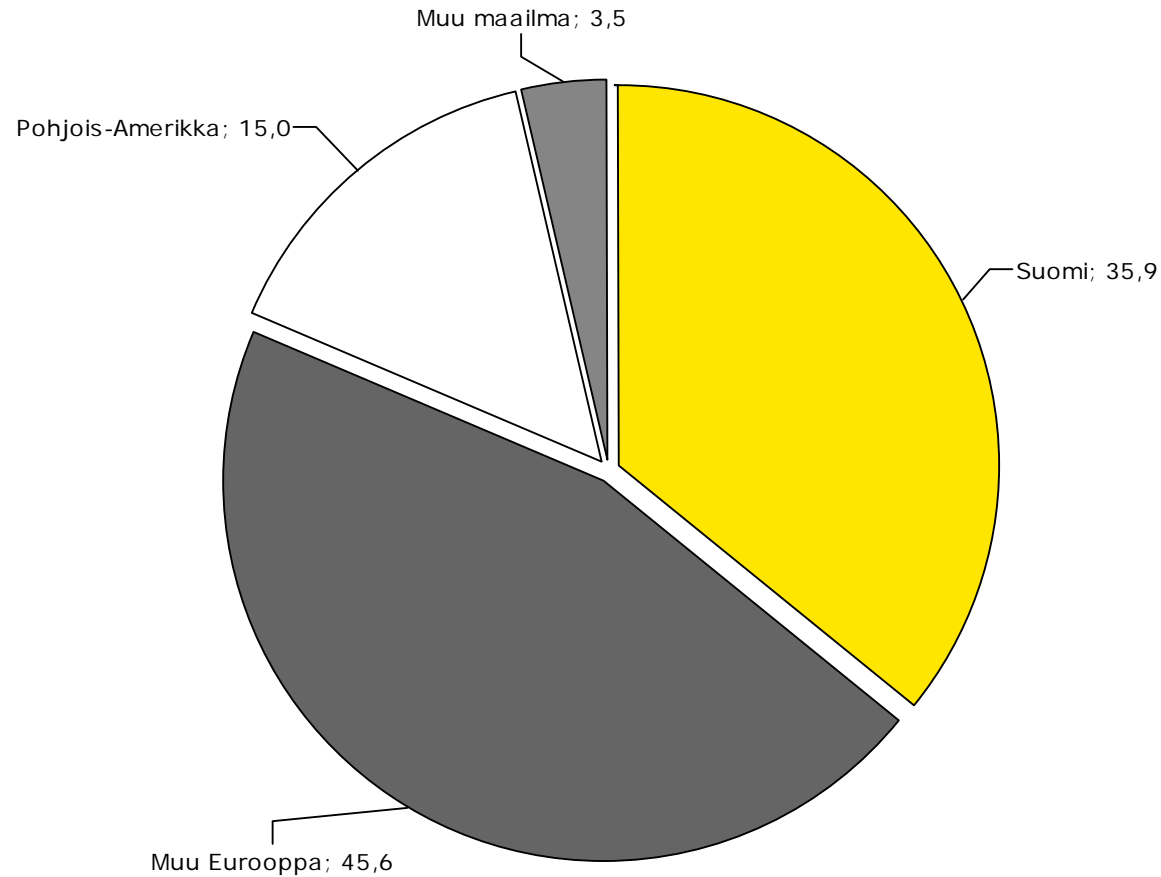
OSAVUOSIKATSAUS

1.1.-30.9.2005

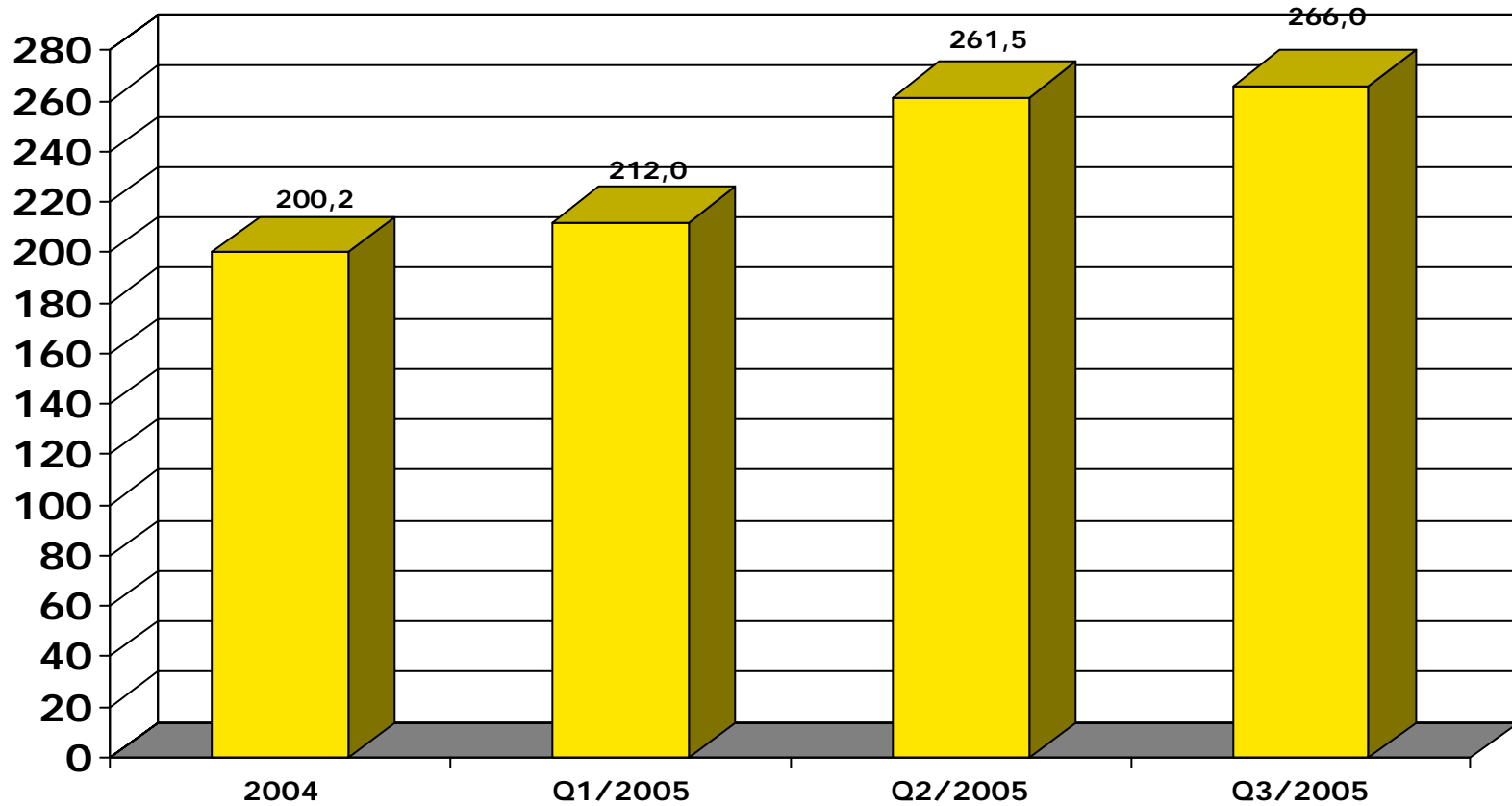
LIIKEVAIHDON JAKAUMA MARKKINA-ALUEITTAIN Q1-Q3/2005, %



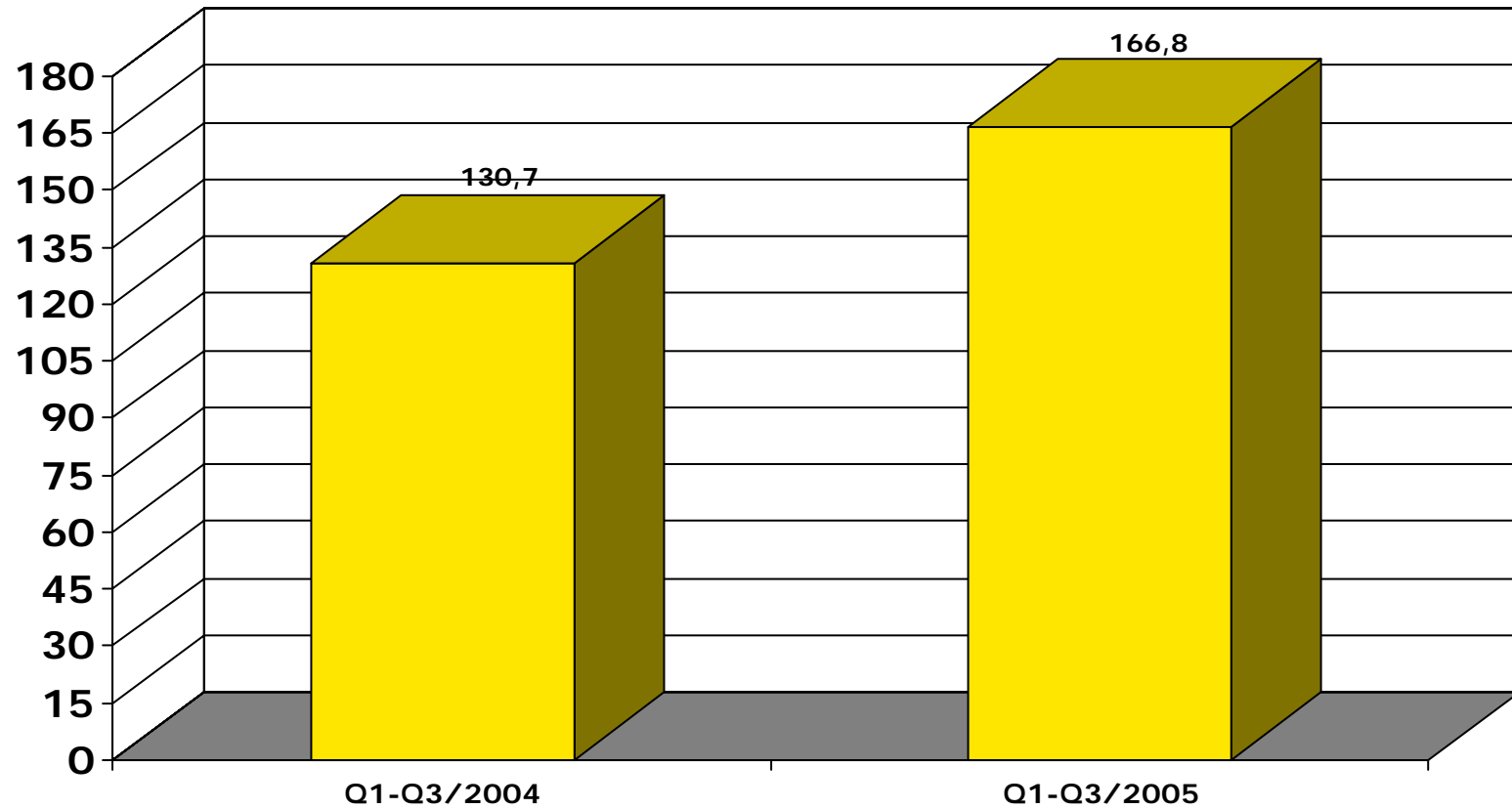
LIKEVAIHDON JAKAUMA MARKKINA-ALUEITTAIN Q1-Q3/2005, %



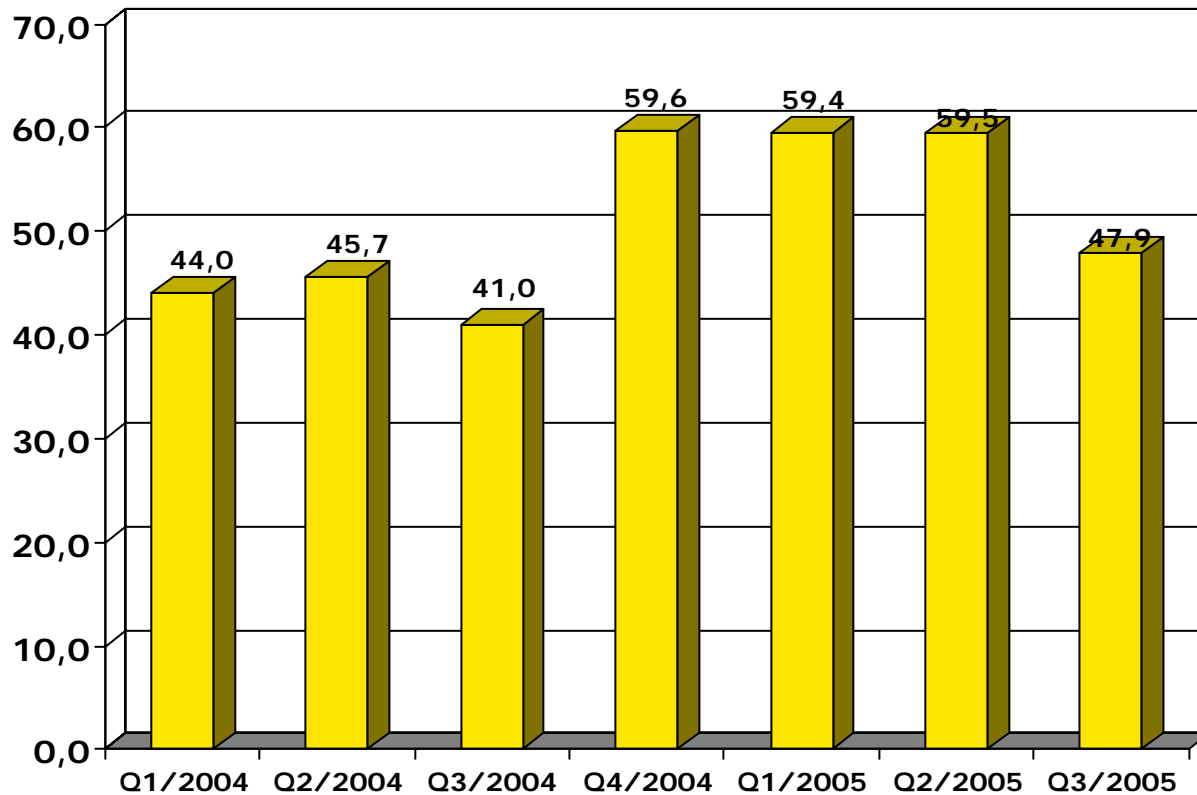
OSAKEKANNAN MARKKINA-ARVO, MEUR



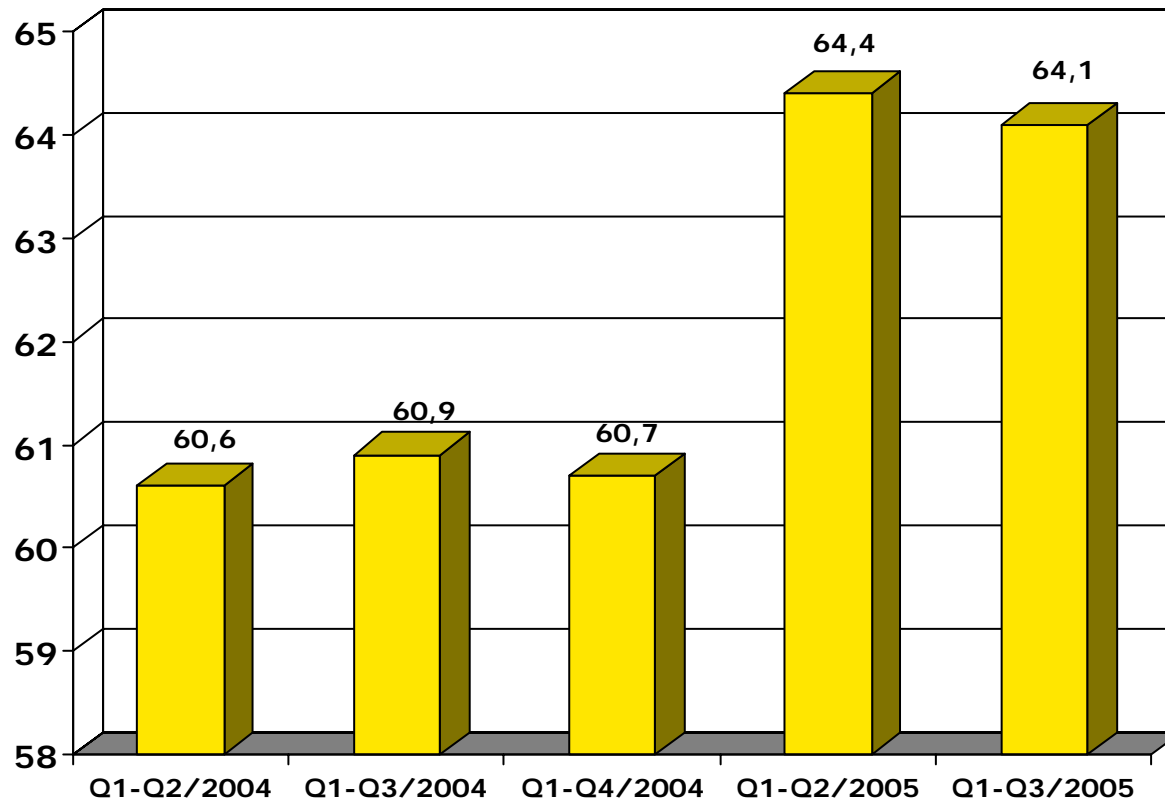
LIKEVAIHTO, MEUR



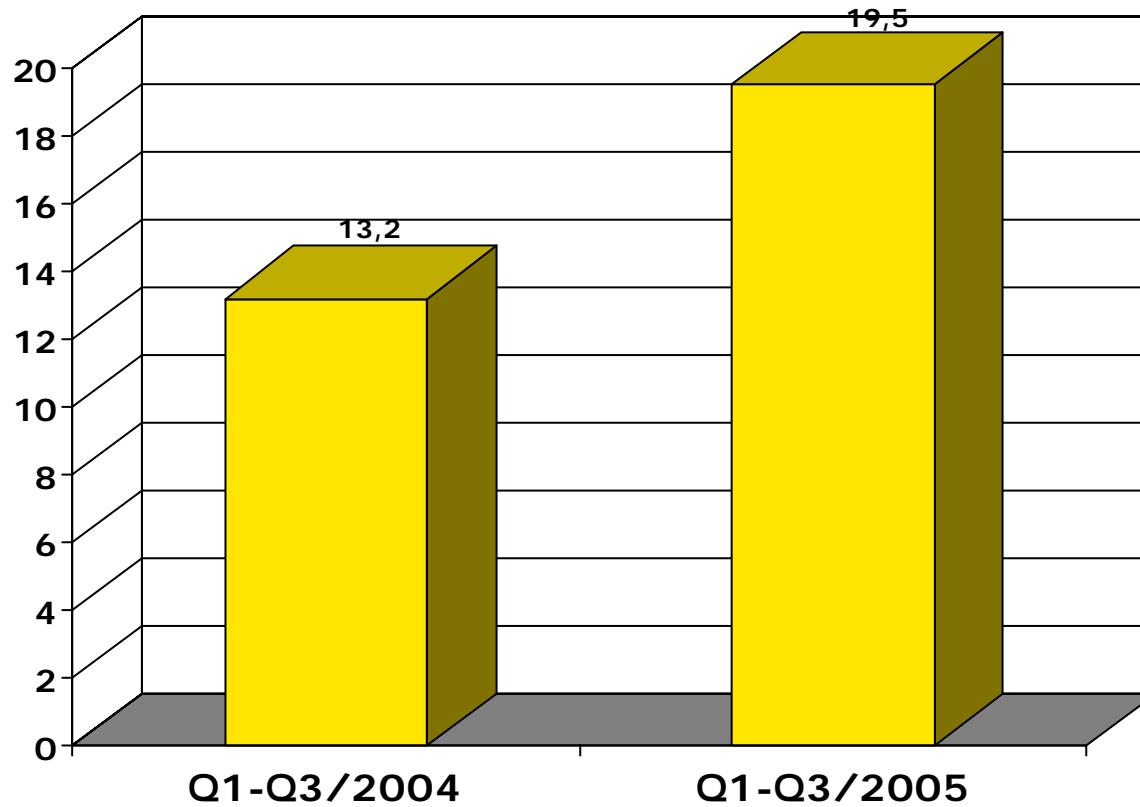
LIKEVAIHTO, MEUR



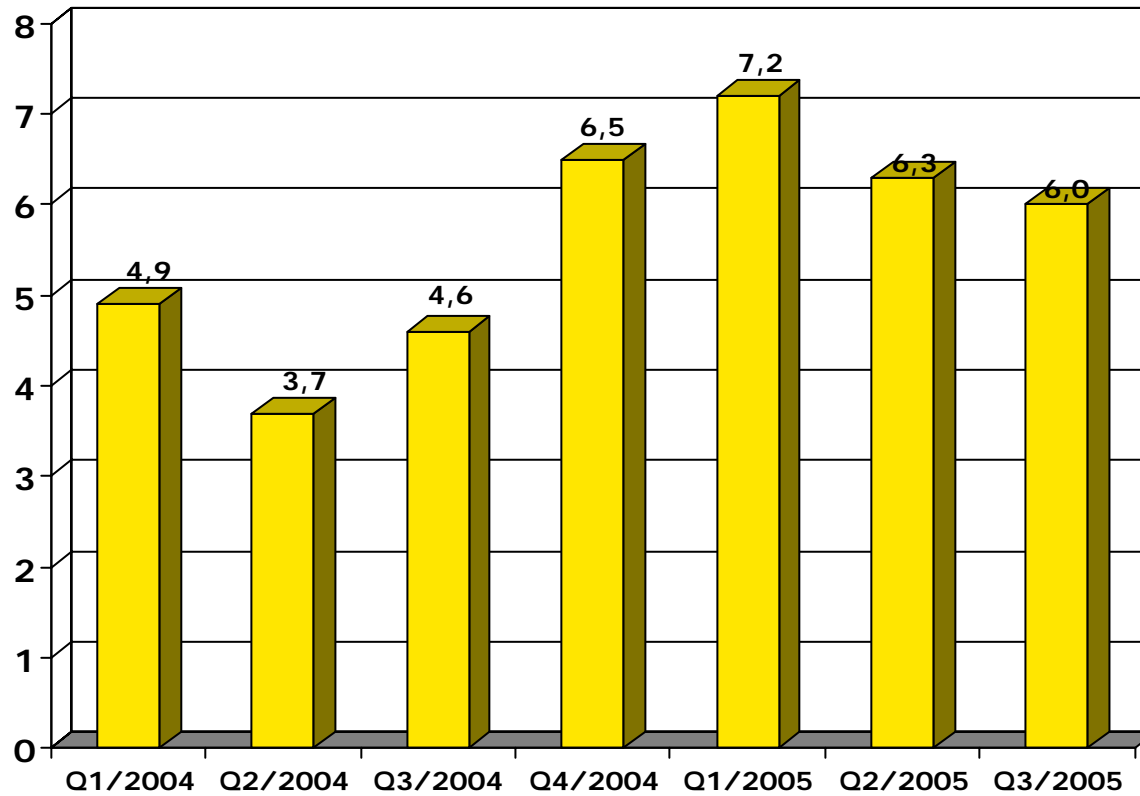
ULKOMAISTEN LIIKETOIMINTOJEN JA VIENNIN OSUUS, %



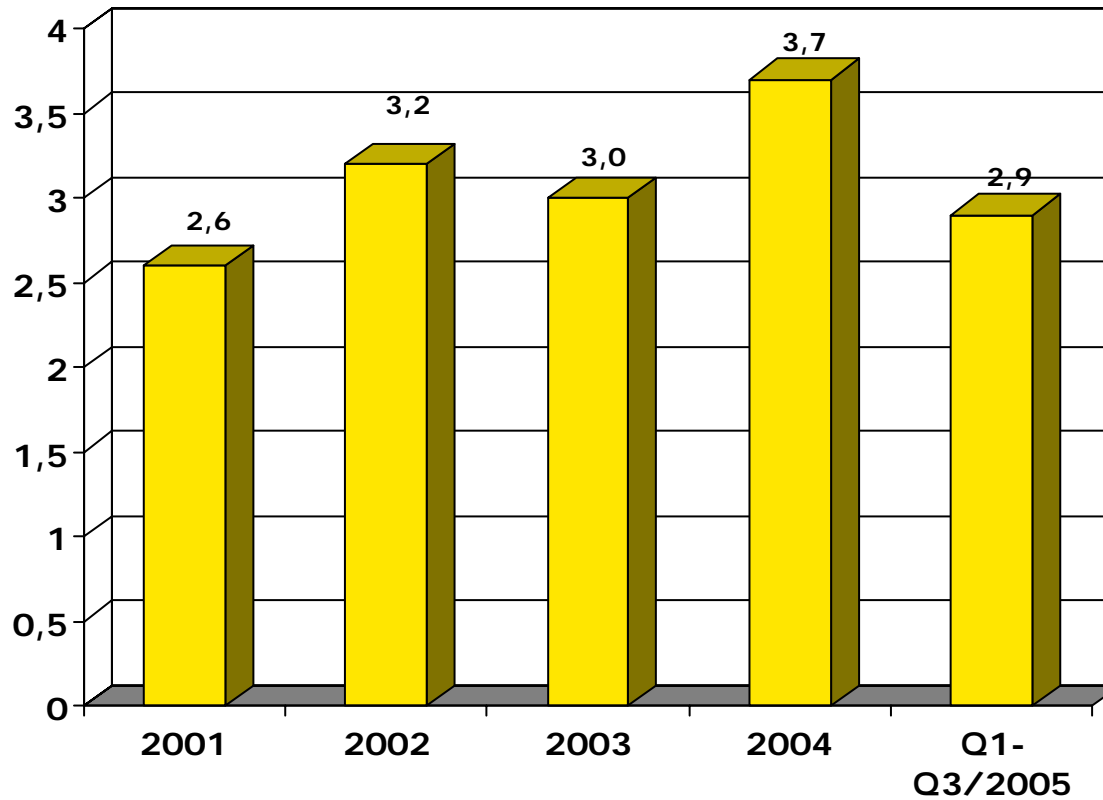
LIKEVOITTO, MEUR



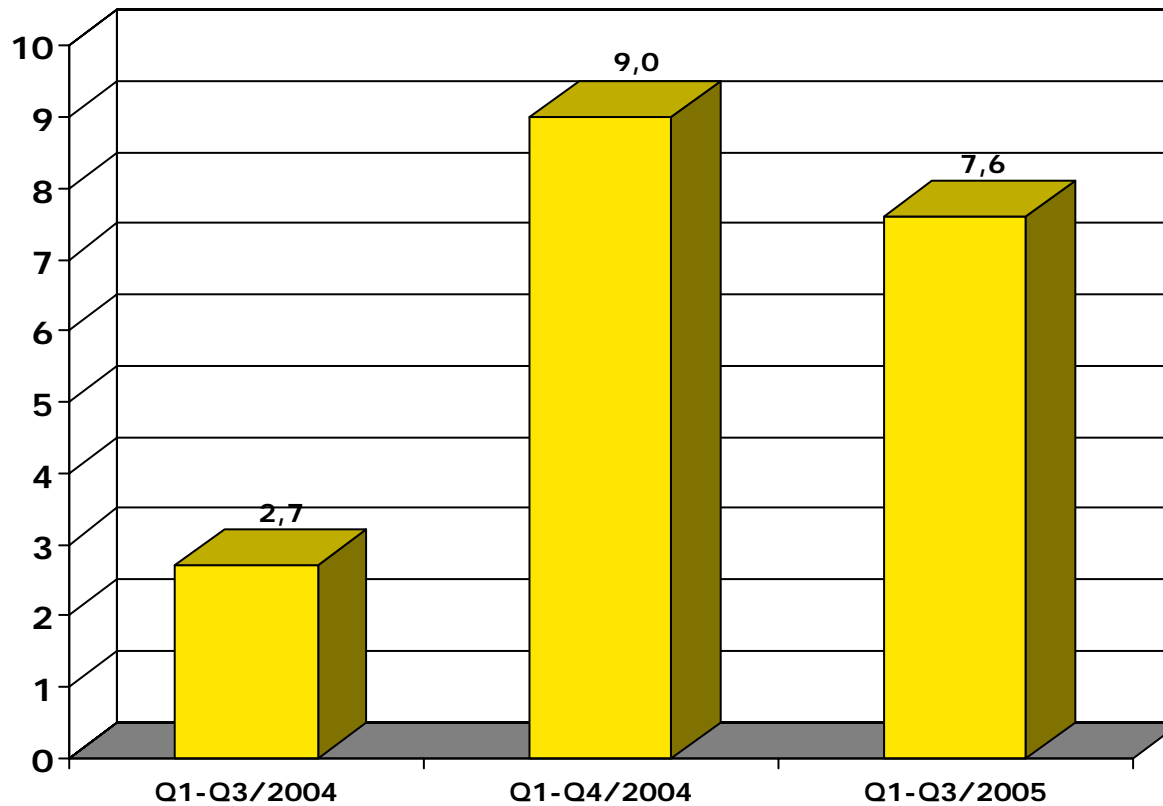
LIIKEVOITTO, MEUR



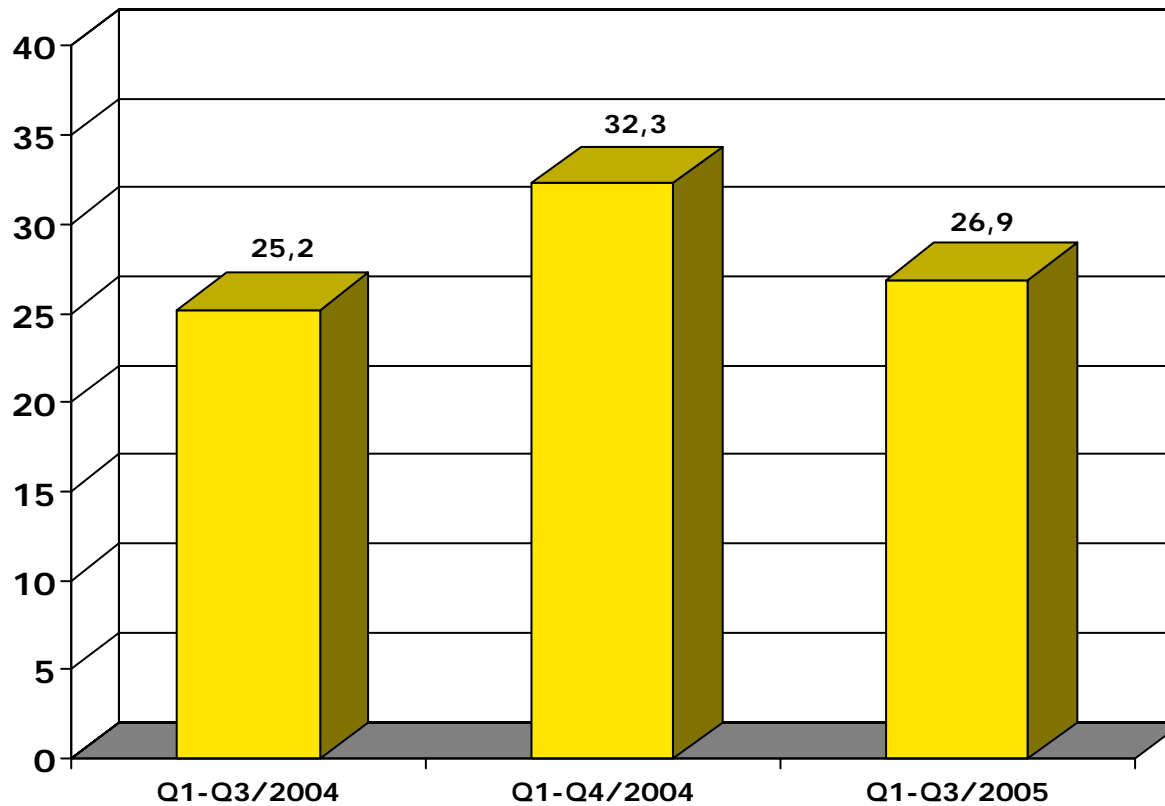
TUTKIMUS- JA KEHITYSMENOT, MEUR



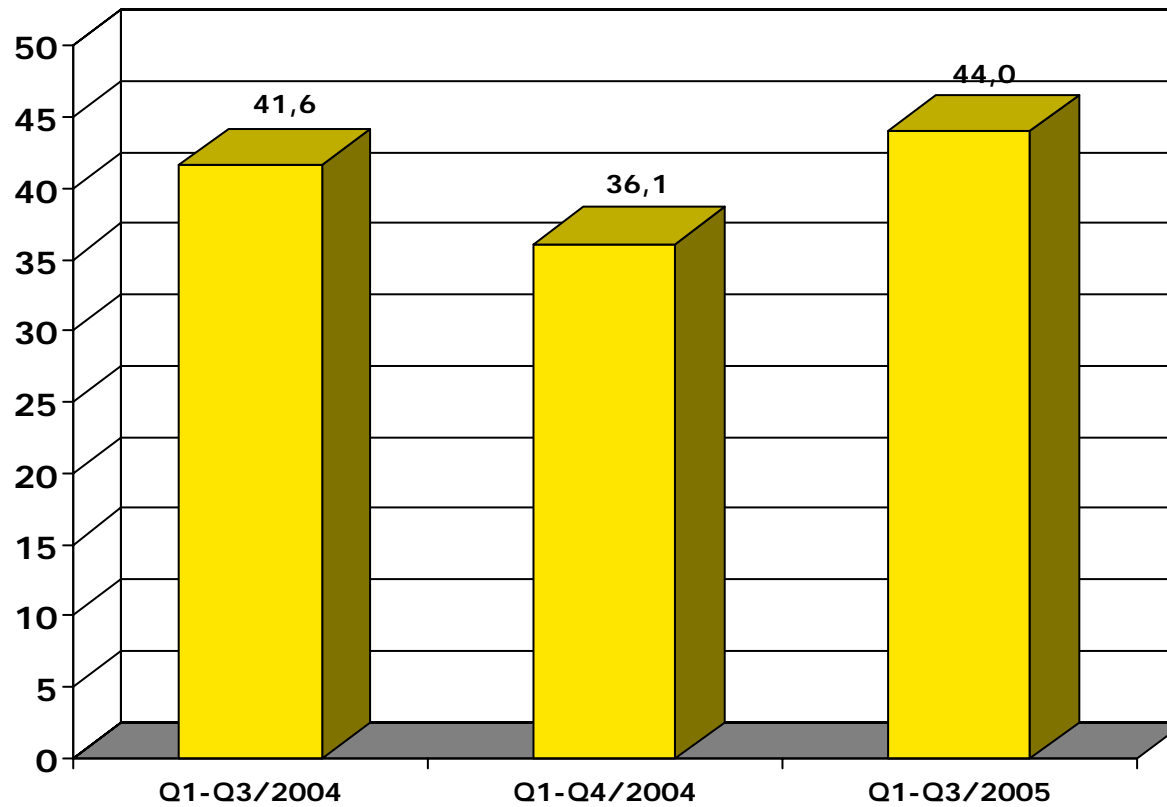
BRUTTOINVESTOINNIT KÄYTTÖMAISUUTEEN, MEUR



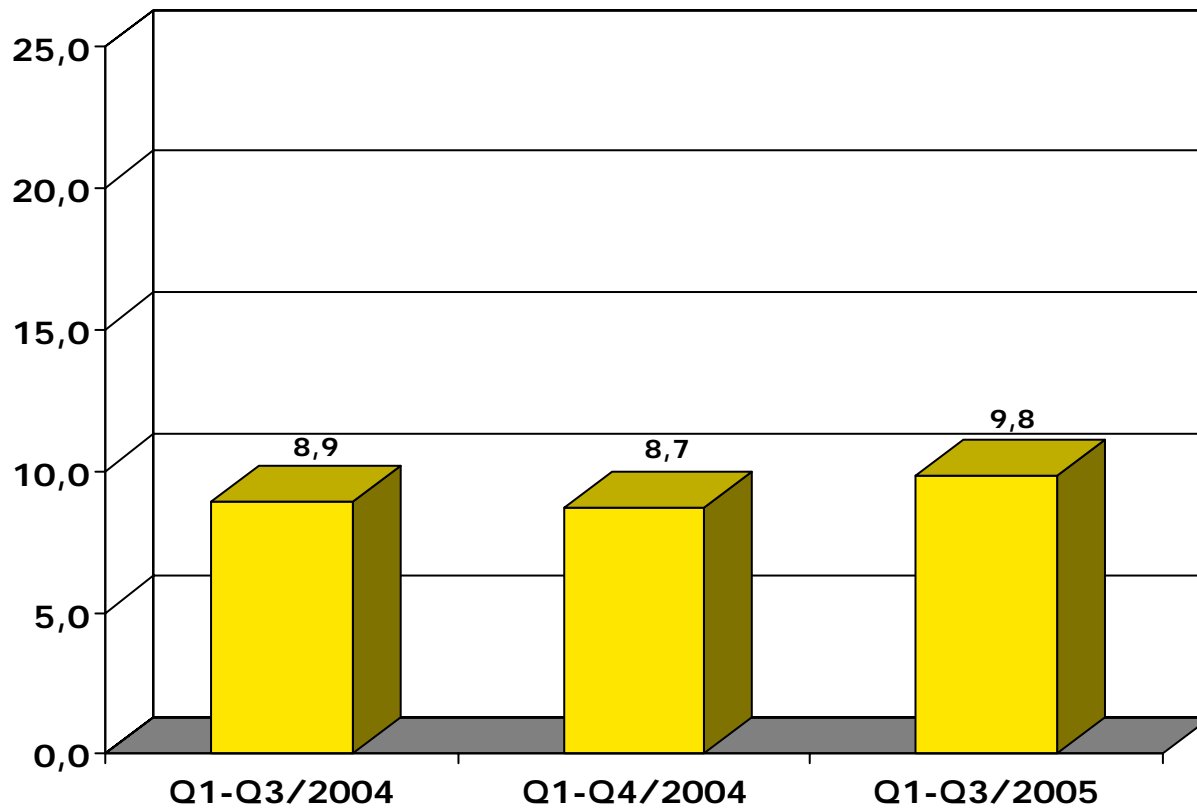
KOROLLINEN VIERAS PÄÄOMA, MEUR



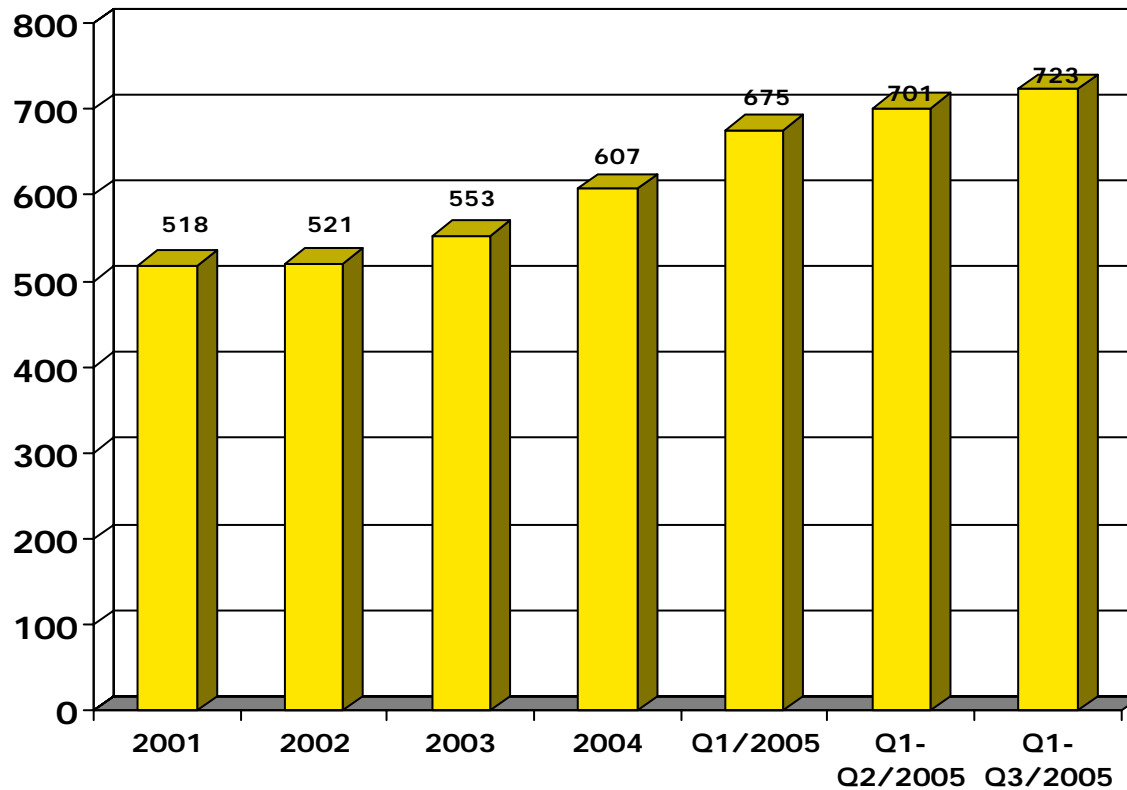
OMAVARAISUUSASTE, %



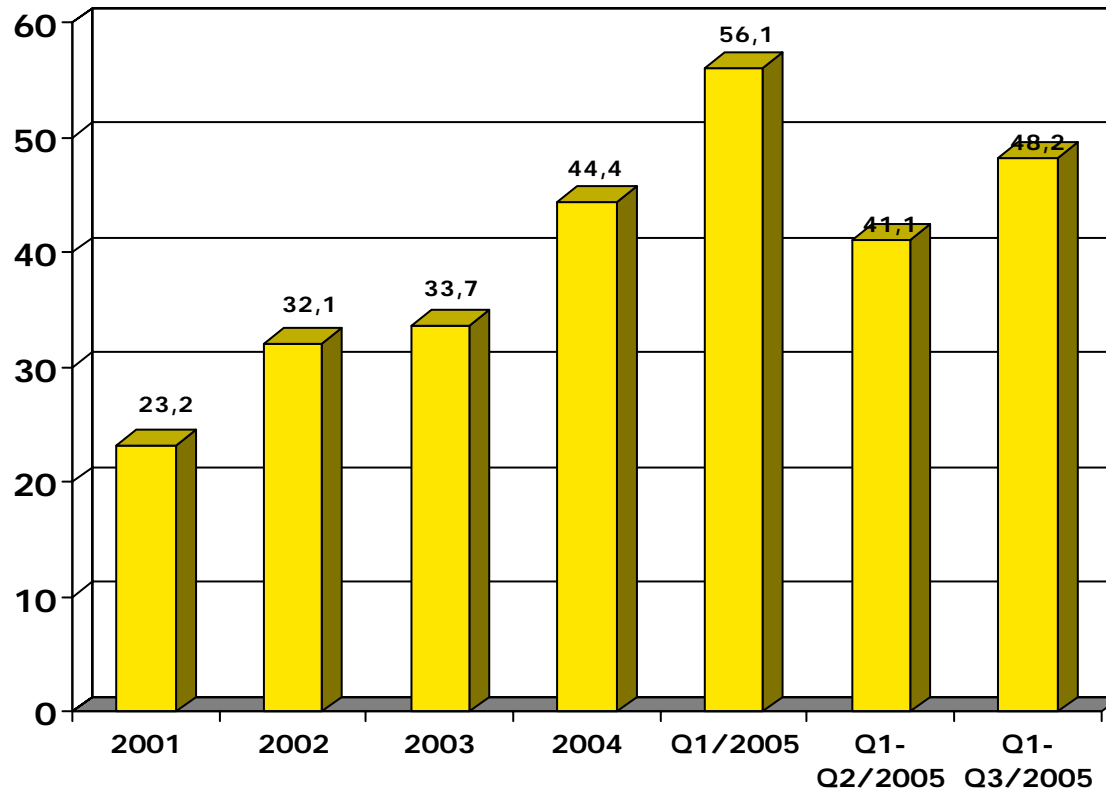
ASIAKAS- JA JÄLLEENMYyjÄ- RAHOITUSVASTUUT, MEUR



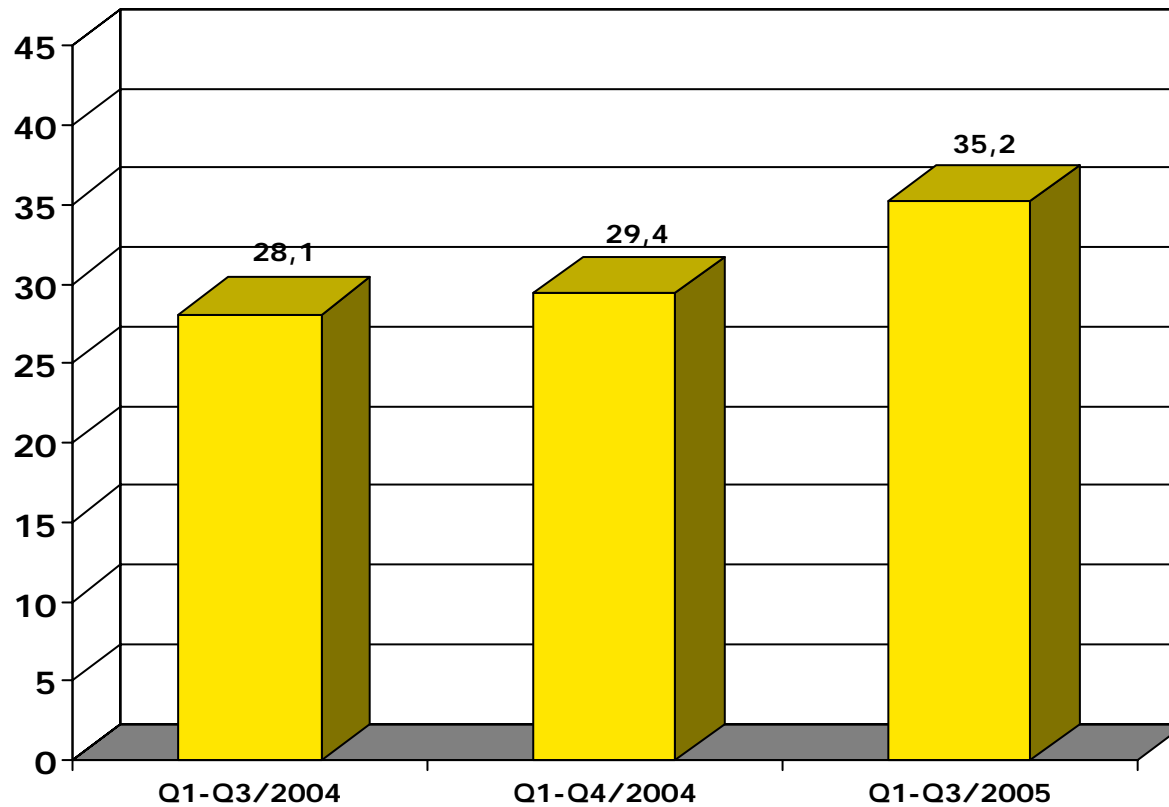
HENKILÖSTÖ KESKIMÄÄRIN



TILAUSKANTA, MEUR



SIJOITETUN PÄÄOMAN TUOTTO-% (ROI)



A large yellow and black Ponsse tracked loader is shown in a forest setting. The machine is equipped with a large hydraulic arm and bucket. The background consists of tall, thin trees and a dense canopy of green leaves. The overall scene is brightly lit, suggesting a sunny day.

PONSSE

www.ponsse.com

Etunimi Sukunimi

E-mail: xxx.xxx@ponsse.com

Tel. xxx xxx xxxx