

Hydraulic fittings

Indicating the sizes of fittings	113	Turning angular fitting	120
Double fitting	114	R1/4"	120
Connecting fitting	114	R3/8"	120
Lead through fitting	114	R1/2"	121
Turning angular fitting	114	R3/4"	121
Reducing fitting	114	R1"	121
Extension fitting	114	R1 1/4"	121
Angle fitting	114	R1 1/2"	121
T-fitting	114	T-fittings	121
T-turning T-fitting	115	R1/4"	121
RSI-fitting	115	R3/8"	121
Measuring fitting	115	R1/2"	121
Muff	115	R3/4"	121
Male plug	115	R1"	121
Female plug	115	T-turning T-fittings	122
Quick connector	115	R1/4"	122
Double fittings	116	R3/8"	122
R1/8"	116	R1/2"	122
R1/4"	116	R3/4"	122
R3/8"	116	R1"	122
R1/2"	116	R1 1/4"	122
R3/4"	116	R1 1/2"	122
R1"	117	RSI-fittings	122
R1 1/4"	117	R1/8"	122
R1 1/2"	117	R1/4"	123
R2"	117	R3/8"	123
Connecting fittings	117	R1/2"	123
R1/8"	117	R3/4"	123
R1/4"	117	R1"	123
R3/8"	117	R1 1/4"	123
R1/2"	118	R1 1/2"	123
R3/4"	118	R2"	123
R1"	118	Measuring fittings	123
R1 1/4"	118	Measuring fitting	123
R1 1/2"	118	Straight.....	123
Reducing fittings	118	45°	124
R1/8"	118	90°	124
R1/4"	118	Adjustment nipple M6-M12.....	124
R3/8"	118	Female plug	124
R3/4"	118	Male plug	124
R1/2"	119	Muff	125
R1"	119	Quick connector	125
R1 1/4"	119	Usit Seal ring	125
Extension fittings	119	Usit Seal ring set (25 pcs)	125
R1 1/4"	119		
Lead through fitting	119		
R1/4"	119		
R3/8"	119		
R1/2"	119		
R3/4"	119		
Angle fitting	120		
R1/4"	120		
R3/8"	120		
R1/2"	120		
R3/4"	120		
R1"	120		

Hydraulic fittings

Using original Ponsse hydraulic fittings, you can ensure that the original dimensions remain unchanged in challenging sites. When designing connections and routes, minimised flow losses are taken into consideration in addition to reliability and installation. By using Ponsse fittings and hoses, you can secure flexible routing and easy installation.

Fittings intended for specific sites guarantee the tightness and reliability of the hydraulics.

Indicating the sizes of fittings

The size of fittings is always indicated as follows:

1. Thread type
2. Thread size
3. Other indications: external thread (U), internal thread (S) and turning capacity (/SU)
4. The angle is indicated after the size information.
5. Any forged fittings are indicated as the last piece of information (indication T).

Example 1



Turning T-FITTING:
R3/4U-R3/4S/SU-R3/4U

R3/4U → R = R-thread, 3/4 = 3/4 inches,
U = external thread

R3/4S/SU → R = R-thread, 3/4 = 3/4 inches,
S = internal thread, /SU = turning

Example 2



Forged 90° angle fitting:
R1/4U-R1/4S 90° T

R1/4S 90° T → R = R-thread, 1/4 = 1/4 inches,
S = internal thread,
90° = 90° angle fitting,
T = forged.

DOUBLE FITTING

- The thread type may vary, but the nominal size of both ends is the same.
- Always an external thread at both ends.



REDUCING FITTING

- An external thread at both ends
- Always a different thread size at both ends.



CONNECTING FITTING

- Always an external and internal thread.



EXTENSION FITTING

- Always with internal threads.



LEAD THROUGH FITTING

- Lead through fittings differ from standard fittings in terms of length.



ANGLE FITTING

- The fitting is forged if the final letter is T.
- The BSPT indication which replaces the thread type marking refers to a cone-like BSP thread.



TURNING ANGULAR FITTING

- The /SU indication refers to the branch where the fitting can be turned using a tightening nut.



T-FITTING

- The second indication refers to the size of the centre branch.
- Example: R3/8U-R3/8U-R3/8U



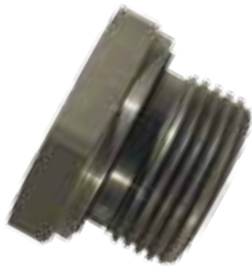
T-TURNING T-FITTING

- The second indication refers to the size of the centre branch.
- The /SU indication refers to the branch where the fitting can be turned.



RSI-FITTING

- Always an external thread at one end and an internal thread at the other end
- The external thread is always indicated first.



MEASURING FITTING



MUFF

- An internal thread at both ends.



MALE PLUG

- Male plugs always have external threads.
- There are two types of male plugs: Allen and hex head plugs
- In the size description, the ALLEN indication refers to an Allen plug and the HEX HEAD indication refers to a hex head plug.



FEMALE PLUG

- Female plugs always have internal threads.



QUICK CONNECTOR

- The size is indicated first, followed by the type (female or male connector): In the size description, the FEMALE indication refers to a female connector and the MALE indication refers to a male connector.



Double fittings



R1/8"

Size	No.
R1/8-R1/8	0060058
R1/8-U7/16JIC	0034207
R1/8-M12X1,5	0015730

R1/4"

Size	No.
R1/4-R1/4	0015735
R1/4-U9/16JIC	0021956
R1/4-U7/16JIC	0015719
R1/4-M16X1,5	0015736
R1/4-M14X1,5	0015731
R1/4-M12X1,5	0015726

R3/8"

Size	No.
R3/8-R3/8	0015503
R3/8-U9/16JIC	0015727
R3/8-U7/8JIC	0055299
R3/8-U7/16JIC	0065245
R3/8-U1/2JIC	0034199
R3/8-NPTF3/8	0015776
R3/8-M20X1,5	0015738
R3/8-M18X1,5	0015737
R3/8-M16X1,5	0015740

Size	No.
R3/8-M14X1,5	0015733
R3/8-BSPT3/8	0015511

R1/2"

Size	No.
R1/2-R1/2	0015842
R1/2-U9/16JIC	0000356
R1/2-U7/8JIC	0058340
R1/2-U7/16JIC	0000337
R1/2-U11/16JIC	0061322
R1/2-NPTF3/8	0034223
R1/2-M26X1,5	0015732
R1/2-M22X1,5	0058267
R1/2-M20X1,5	0015739
R1/2-M18X1,5	0022643
R1/2-M16X1,5	0060167
R1/2-BSPT1/2	0015834

R3/4"

Size	No.
R3/4-R3/4	0015479
R3/4-U3/4JIC	0034181
R3/4-U15/16JIC	0065252
R3/4-U13/16JIC	0058343
R3/4-U11/16 JIC	0067144
R3/4-NPTF3/4	0015867
R3/4-M26X1,5	0041520
R3/4-BSPT3/4	0015487
R3/4-11/16JIC	0015859

R1"

Size	No.
R1-R1	0033019
R1-U15/8JIC	0065253
R1-U15/8 UNF	0067776
R1-U15/16JIC	0015438
R1-U11/16JIC	0000359
R1-NPTF1	0015446

R1 1/4"

Size	No.
R1 1/4-R1 1/4	0033020
R1 1/4-U15/8JIC	0015439
R1 1/4-U15/16JIC	0000339

R1 1/2"

Size	No.
R1 1/2-R1 1/2	0033025
R1 1/2-U17/8JIC	0022046

R2"

Size	No.
R2-R2	0059389

Connecting fittings



R1/8"

Size	No.
R1/8U-R1/4S	0015633
R1/8U-R1/8S	0015634

R1/4"

Size	No.
R1/4U-R1/8S	0015586
R1/4U-R1/4S	0015750
R1/4U-R3/8S	0015578
R1/4U-U7/16S	0000326
R1/4U-R1/2S	0000068
R1/4U-JIC9/16S	0065766
R1/4U-U9/16S	0067146

R3/8"

Size	No.
R3/8U-R1/4S	0015560
R3/8U-R3/8S	0015768
R3/8U-ORFS3/8S	0058854
R3/8U-R1/2S	0015552
R3/8U-U9/16S	0000376

R1/2"

Size	No.
R1/2U-R1/4S	0010263
R1/2U-R3/8S	0010264
R1/2U-R1/2S	0015826
R1/2U-R3/4S	0015529

R3/4"

Size	No.
R3/4U-R1/2S	0015594
R3/4U-U11/16S JIC	0065821
R3/4U-R3/4S	0015495
R3/4U-R1S	0015602
R3/4U-1S ORFS	0067121
R3/4U-R11/4S	0061206

R1"

Size	No.
R1U-R3/4S	0044170
R1U-U15/16S JIC	0066632
R1U-R1S	0000067
R1U-R11/4S	0000073
R1U-R11/2S	0066395

R11/4"

Size	No.
R11/4U-R1S	0000072
R11/4U-R11/4S	0044175

R11/2"

Size	No.
R11/2U-R11/4S	0055160
R11/2U-R11/2S	0000077

Reducing fittings**R1/8"**

Size	No.
R1/8-R1/4	0015636

R1/4"

Size	No.
R1/4-R3/8	0024398
R1/4-R3/8 L=87MM	0044870
R1/4-R1/2	0015644
R1/4-U3/4 JIC	0000391
R1/4-U3/4	0015720

R3/8"

Size	No.
R3/8-R1/2	0015651
R3/8-R3/4	0015669
R3/8-U3/4JIC	0000354
R3/8-U3/4	0015721

R3/4"

Size	No.
R3/4-M22X1,5	0064990
R3/4-U7/8JIC	0015729
R3/4-U11/16	0022055
R3/4-U15/16	0022054
R3/4-U15/16JIC	0015862

Size	No.
R3/4-R1	0015693
R3/4-R11/4	0024414
R3/4-R11/2	0034231

R1/2"

Size	No.
R1/2-RK3/8	0015628
R1/2-R3/4	0015677
R1/2-U3/4JIC	0015818
R1/2-R1	0015685

R1"

Size	No.
R1-R11/4	0015701
R1-R11/2	0024406

R11/4"

Size	No.
R11/4-R11/2	0015702

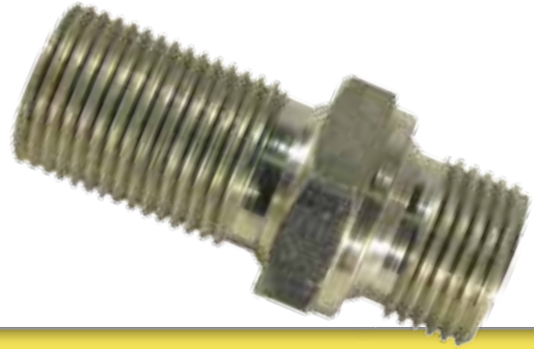
Extension fittings



R11/4"

Size	No.
R1/4-R1/4	0015784
R3/8-R3/8	0015743
R1/2-R1/2	0015792
R3/4-R3/4	0055053
R1-R1	0022648

Lead through fitting



R1/4"

Size	No.
R1/4-R1/4 STRAIGHT	0021990
R1/4SU-R1/4 90°	0055123

R3/8"

Size	No.
R3/8-R3/8 STRAIGHT	0021991
R3/8SU-R3/8 90°	0063731

R1/2"

Size	No.
R1/2-R1/2 STRAIGHT	0042000

R3/4"

Size	No.
R3/4-R3/4 STRAIGHT	0015480
3/4JIC-3/4JIC STRAIGHT	0066961

Angle fitting



R1/4"

Size	No.
R1/4U-R1/4S 45° T	0022647
R1/4U-BSPT1/4U 90°	0015875
R1/4U-R1/4S 90° T	0022649
R1/4U-U7/16U 90°	0000392

R3/8"

Size	No.
R3/8U-R3/8S 45° T	0062053
R3/8U-R3/8S 90° T	0048259
R3/8U-R3/8U 90°	0015883

R1/2"

Size	No.
R1/2U-R1/2S 45° T	0062056
R1/2U-R1/2S 90° T	0048260
R1/2U-R1/2U 90°	0015891

R3/4"

Size	No.
R3/4U-R3/4S 45° T	0033005
R3/4U-BSPT3/4U 90°	0035857
R3/4U-R3/4S 90° T	0039961

R1"

Size	No.
R1U-R1S 45° T	0033006
R1S/SU-R1/2U 90° T	0067590
R1U-BSPT1U 90°	0035856
R1U-R1S 90° T	0039960

Turning angular fitting



R1/4"

Size	No.
R1/4U/SU-R1/4U 45°	0015519
R1/4U/SU-R3/8U 45°	0015520
R1/4U/SU-U9/16U 45°	0065264
R1/4U/SU-R1/4U 90°	0044781
R1/4U/SU-R3/8U 90°	0015513
R1/4U/SU-U7/16U 90° JIC	0065269
R1/4U/SU-U9/16U 90°	0065297
R1/4U/SU-U3/4U 90° JIC	0000306

R3/8"

Size	No.
R3/8U/SU-R3/8U 45°	0015521
R3/8U/SU-U9/16U 45°	0065265
R3/8U/SU-R1/4U 90°	0062116
R3/8U/SU-R3/8U 90°	0015512

Size	No.
R3/8U/SU-U9/16U 90°	0000393
R3/8U/SU-U9/16U 90° JIC	0065271

R1/2"

Size	No.
R1/2U/SU-R1/2U 45°	0015522
R1/2U/SU-R1/2U 90°	0044782
R1/2U-R3/8U/SU 90°	0067803
R1/2U/SU-U9/16U 90°	0065273
R1/2U/SU-U11/16U 90°	0065274
R1/2U/SU-U3/4U 90°	0065296
R1/2U/SU-U3/4U 90°	0000379
R1/2U/SU-U7/8U 90°	0066970

R3/4"

Size	No.
R3/4U/SU-U11/16U 45°	0065268
R3/4U/SU-R3/4U 45°	0057185
R3/4U/SU-R1/2U 90°	0064017
R3/4U/SU-R3/4U 90°	0044785
R3/4U/SU-U11/16U 90°	0065295

R1"

Size	No.
R1U/SU-R3/4U 45°	0067967
R1U/SU-R1U 45°	0033010
R1U/SU-R3/4U 90°	0065574
R1U/SU-R1U 90°	0044786

R11/4"

Size	No.
R11/4U/SU-R11/4U 90°	0055159

R11/2"

Size	No.
R11/2U/SU-R11/2U 90°	0066394

T-fittings



R1/4"

Size	No.
R1/4U-R1/4U-R1/4U	0015909

R3/8"

Size	No.
R3/8U-R3/8U-R3/8U	0015917
R3/8U-BSPT3/8U-R3/8U	0033011

R1/2"

Size	No.
R1/2U-R1/2U-R1/2U	0015461
R1/2U-BSPT1/2U-R1/2U	0033012

R3/4"

Size	No.
R3/4U-R3/4U-R3/4U	0015453

R1"

Size	No.
R1U-R1U-R1U	0033001

T-turning T-fittings



R1/4"

Size	No.
R1/4S/SU-R1/4U-R1/4U	0062372
R1/4U/SU-R1/4U-R1/4U	0015516
R1/4U/SU-U9/16U-U9/16UJIC	0067145
R1/4U-R1/4S/SU-R1/4U	0062373
R1/4U-R1/4U/SU-R1/4U	0044783

R3/8"

Size	No.
R3/8S/SU-R3/8U-R3/8U	0055221
R3/8U/SU-R3/8U-R3/8U	0015517
R3/8U/SU-U9/16U-U9/16UJIC	0067148
R3/8U-R3/8S/SU-R3/8U	0055273
R3/8U-R3/8U/SU-R3/8U	0015514
R3/8S/SU-R3/8U-R3/8U	0065999

R1/2"

Size	No.
R1/2S/SU-R1/2U-R1/2U	0064018
R1/2U/SU-R1/2U-R1/2U	0015518
R1/2U/SU-U7/8JIC-U7/8JIC	0066971
R1/2U-R1/2U/SU-R1/2U	0015515
R1/2U-R3/4U/SU-R1/2U	0067455
R3/8S/SU-R3/8U-R3/8U	0065999

R3/4"

Size	No.
R3/4S/SU-R3/4U-R3/4U	0057358
R3/4U/SU-R3/4U-R3/4U	0057773
R3/4U-R3/4U/SU-R3/4U	0044787

R1"

Size	No.
R1U/SU-R1U-R1U	0059105
R1U-R1U/SU-R1U	0044788
R1S/SU-R1U-R1U	0058049

R11/4"

Size	No.
R11/4U/SU-R11/4U-R11/4U	0061204

R11/2"

Size	No.
R11/2U/SU-R11/2U-R11/2U	0059645

RSI-fittings



R1/8"

Size	No.
R1/8-R1/4 RSI	0044850

R1/4"

Size	No.
R1/4-R1/8 RSI	0044851
R1/4-R3/8 RSI	0022749

R3/8"

Size	No.
R3/8-R1/8	0062367
R3/8-R1/4 RSI	0022756
R3/8-R1/2 RSI	0022772

R1/2"

Size	No.
R1/2-R1/4 RSI	0022814
R1/2-R3/8 RSI	0022764
R1/2-R1/2 RSI	0022816
R1/2-R3/4 RSI	0022721

R3/4"

Size	No.
R3/4-R1/4 RSI	0034090
R3/4-R3/8 RSI	0022780
R3/4-R1/2 RSI	0022798
R3/4-R1 RSI	0022731

R1"

Size	No.
R1-R1/2 RSI	0044192
R1-R3/4 RSI	0044190

R1 1/4"

Size	No.
R1 1/4-R3/4 RSI	0055022
R1 1/4-R1 RSI	0044197

R1 1/2"

Size	No.
R1 1/2-R3/4 RSI	0055158
R1 1/2-R1 RSI	0044198
R1 1/2-R1 1/4 RSI	0061205

R2"

Size	No.
R2-R1 1/4 RSI	0058639

Measuring fittings



MEASURING FITTING

Size	No.
R1/8	0006807
R1/4	0006808

STRAIGHT

Size	No.
M6X1.00	0045120
MBX1.00	0067023
MBX1.25	0026633
KR1/8	0026641
UNF 1/4	0057147

45°

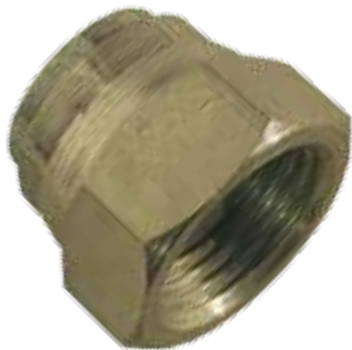
Size	No.
M6X1.00	0036145
M8X1.00	0061078
M8X1.25	0026626
KR1/8	0026618

90°

Size	No.
M6X1.00	0045110
M8X1.25	0026625
KR1/8	0026617

ADJUSTMENT NIPPLE M6-M12

Size	No.
Adjustment nipple M6-M12	P8301

**FEMALE PLUG**

Size	No.
R1/2	0036715
R1/4	0038780
R3/8	0038790
R1	0044550
R3/4	0044780
ORFS 3/4» (12FNMLS)	0064028

**MALE PLUG**

Size	No.
R1/2 ALLEN	0021972
R1/8 ALLEN	0021996
R3/8 ALLEN	0021998
R1/4 ALLEN	0022004
R3/4 ALLEN	0022475
R1 ALLEN	0022476
R3/4 HEX	0047793
R1 1/2 ALLEN	0055265

**MUFF**

Size	No.
R1/4	0040975
R3/8	0040977
R1/2	0040980
R3/4 37 MM	0040982
R1/2 AISI316	0063186
R3/4 AISI316	0063187
R1 AISI316	0064830



QUICK CONNECTOR

Size	No.
1/4 FEMALE	0064205
3/8 FEMALE	0063161
1/2 FEMALE	0022699
3/4 FEMALE	0022682
1/4 MALE	0064206
3/8 MALE	0063162
1/2 MALE	0022681
3/4 MALE	0022683



USIT SEAL RING

Size	No.
1/8	0024745
1/4	0017301
3/8	0017319
1/2	0017327
3/4	0017335
1	0017343
1 1/4	0017350
1 1/2	0017352
2	0060549

USIT SEAL RING SET (25 PCS)

Size	No.
1/4 x 25	001730125
3/8 x 25	001731925
1/2 x 25	001732725
3/4 x 25	001733525
1 x 25	001734325